

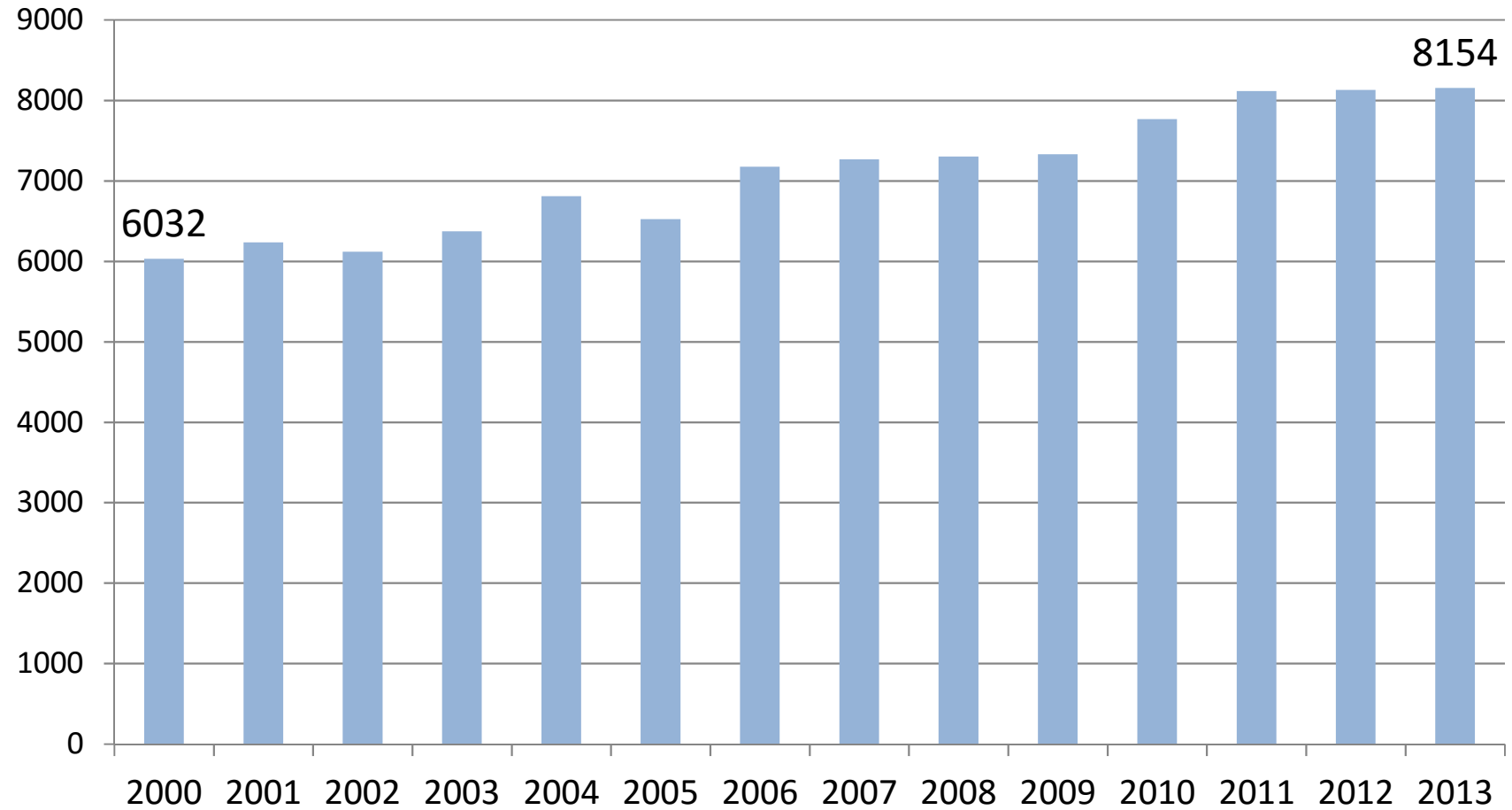
Vähk Eestis - haigestumus-, elulemus- ja suremustrendid

Kaire Innos MD, PhD

TAI epidemioloogia ja biostatistika osakond

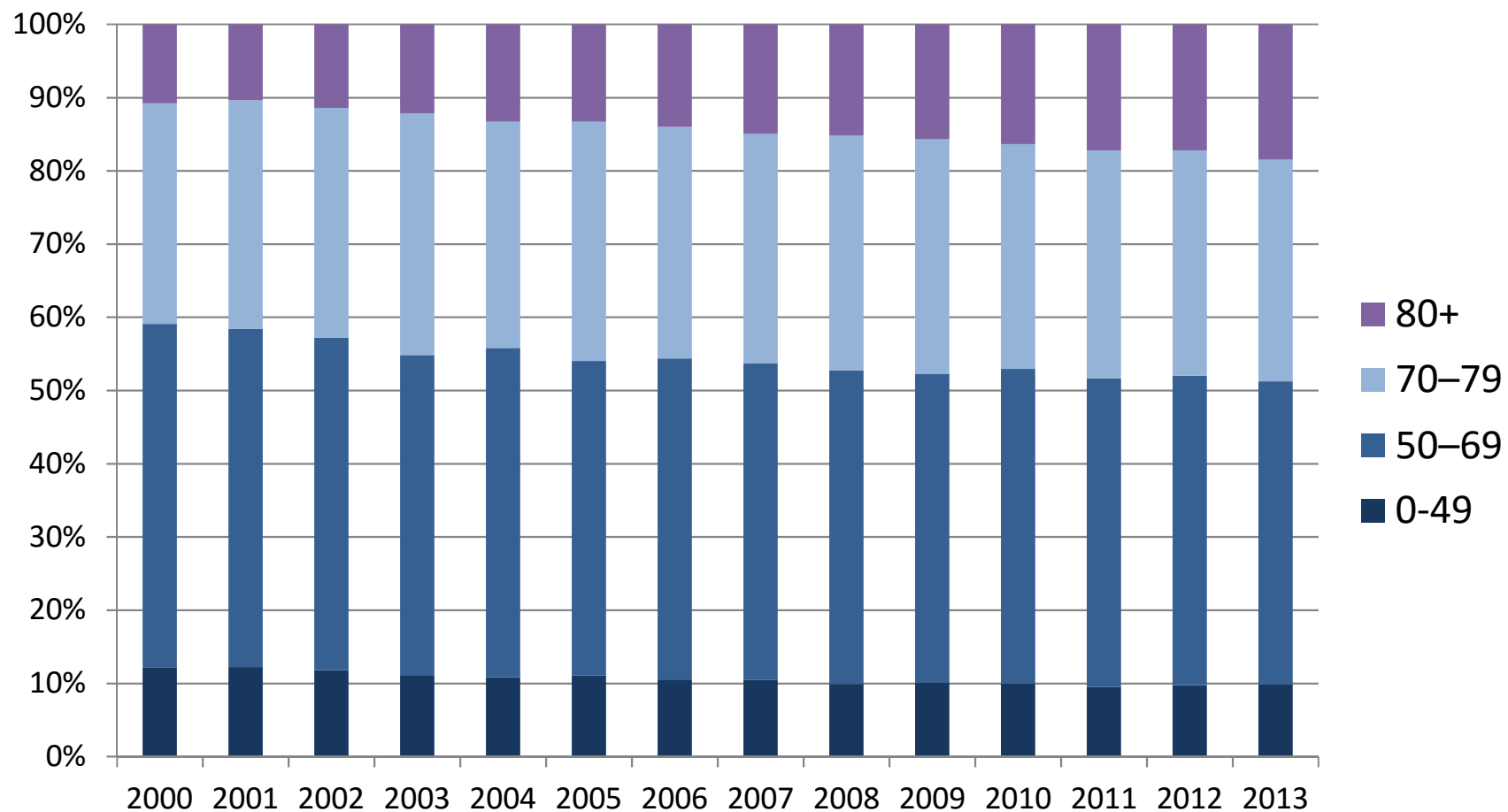
Vähi esmasjuhtude arv, 2000–2013

Allikas: vähiregister



Vähi esmasjuhtude vanusjaotus, 2000–2013

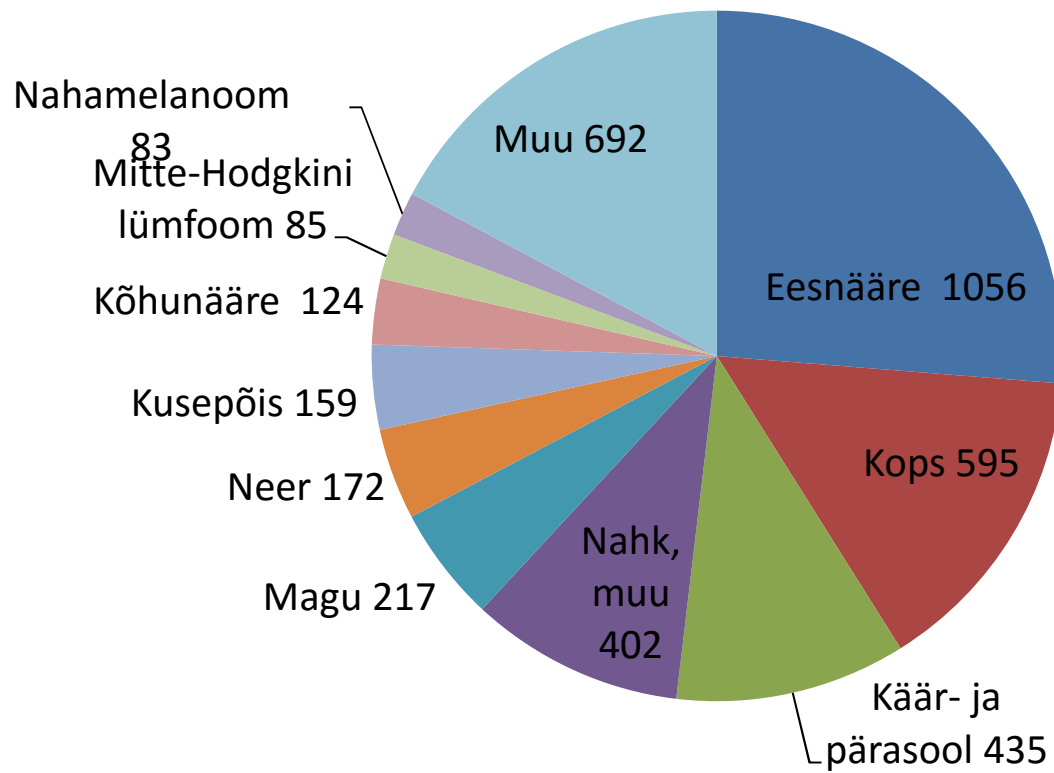
Allikas: vähiregister



Sagedasemad vähipaikmed, mehed 2013

Allikas: vähiregister

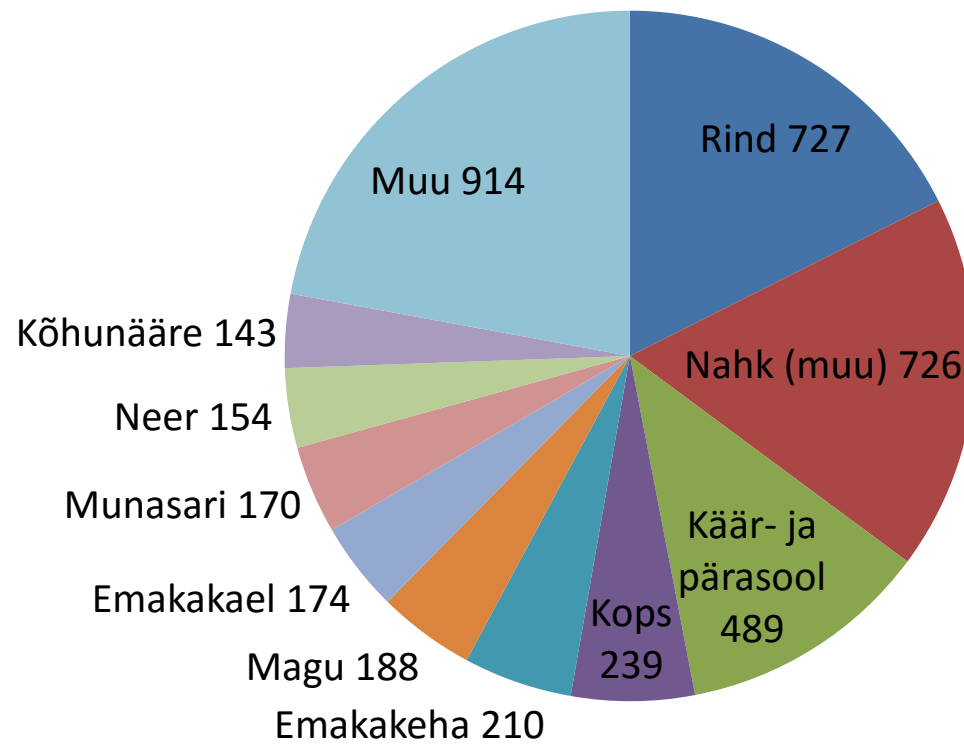
Kokku 4020



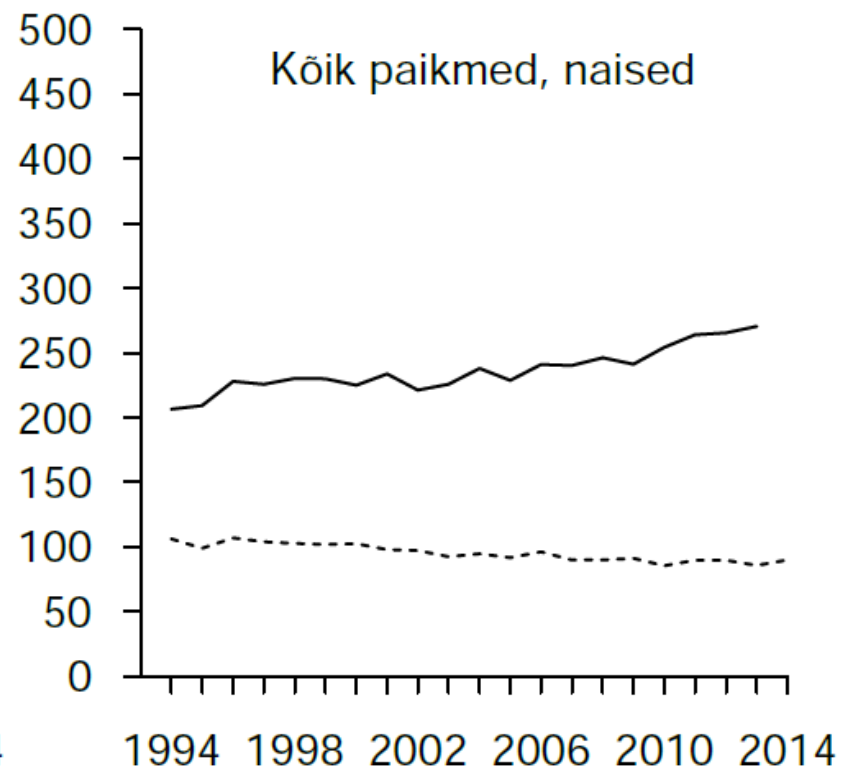
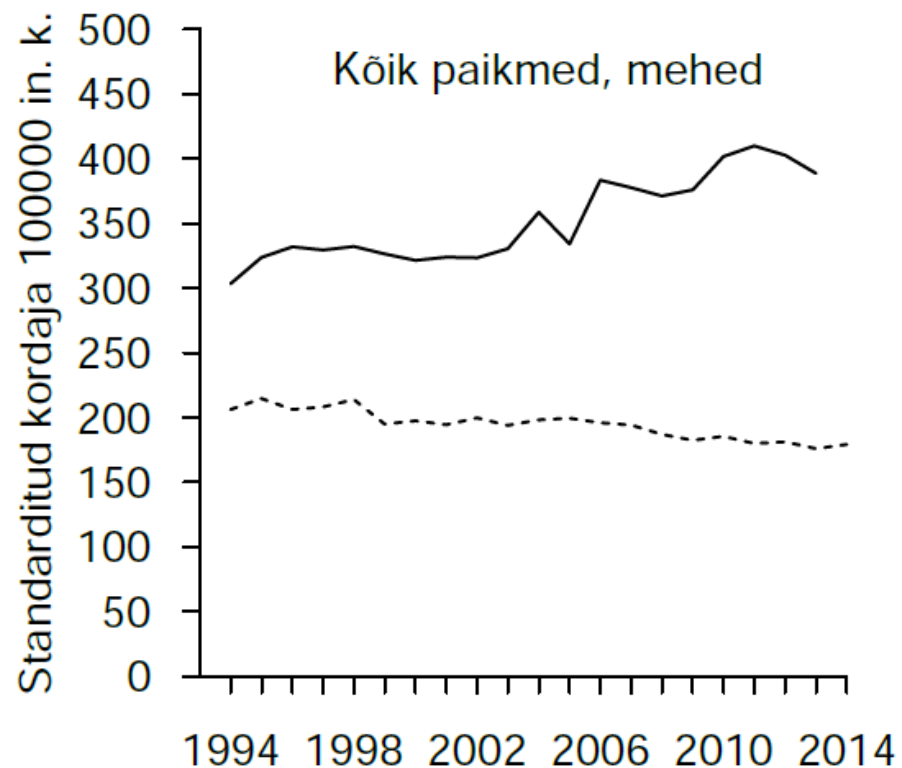
Sagedasemad vähipaikmed, naised 2013

Allikas: vähiregister

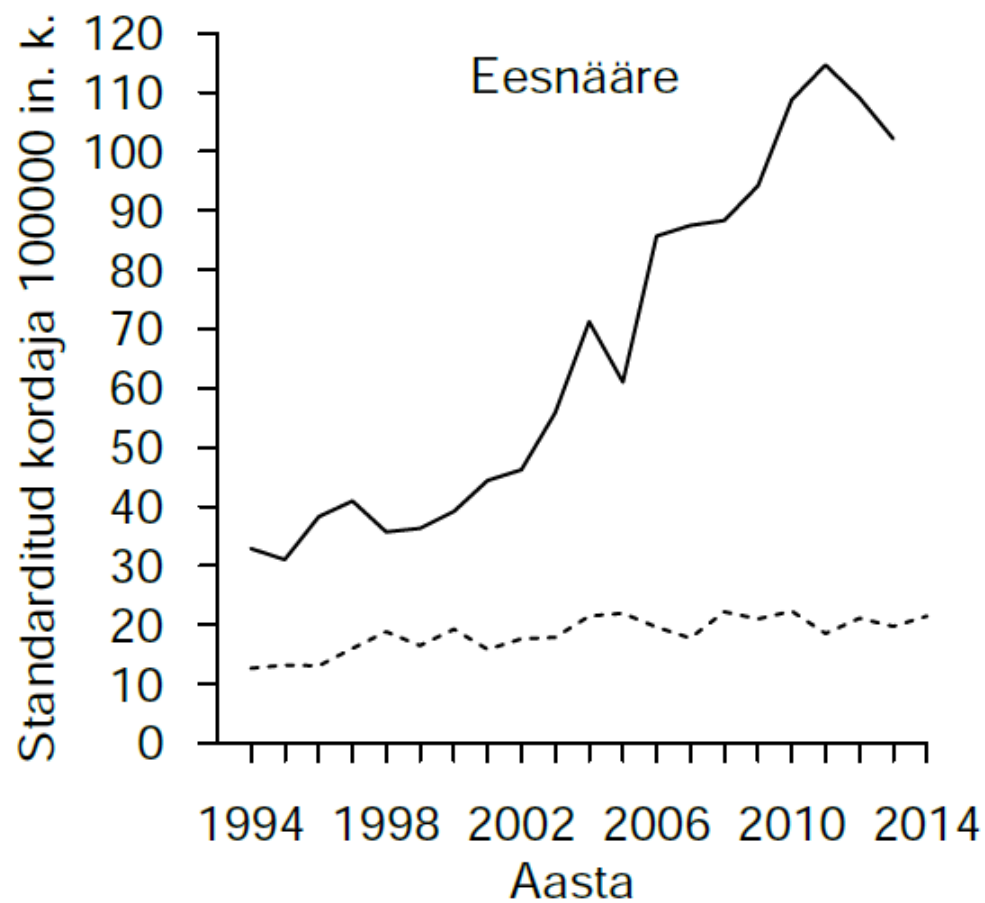
Kokku 4134



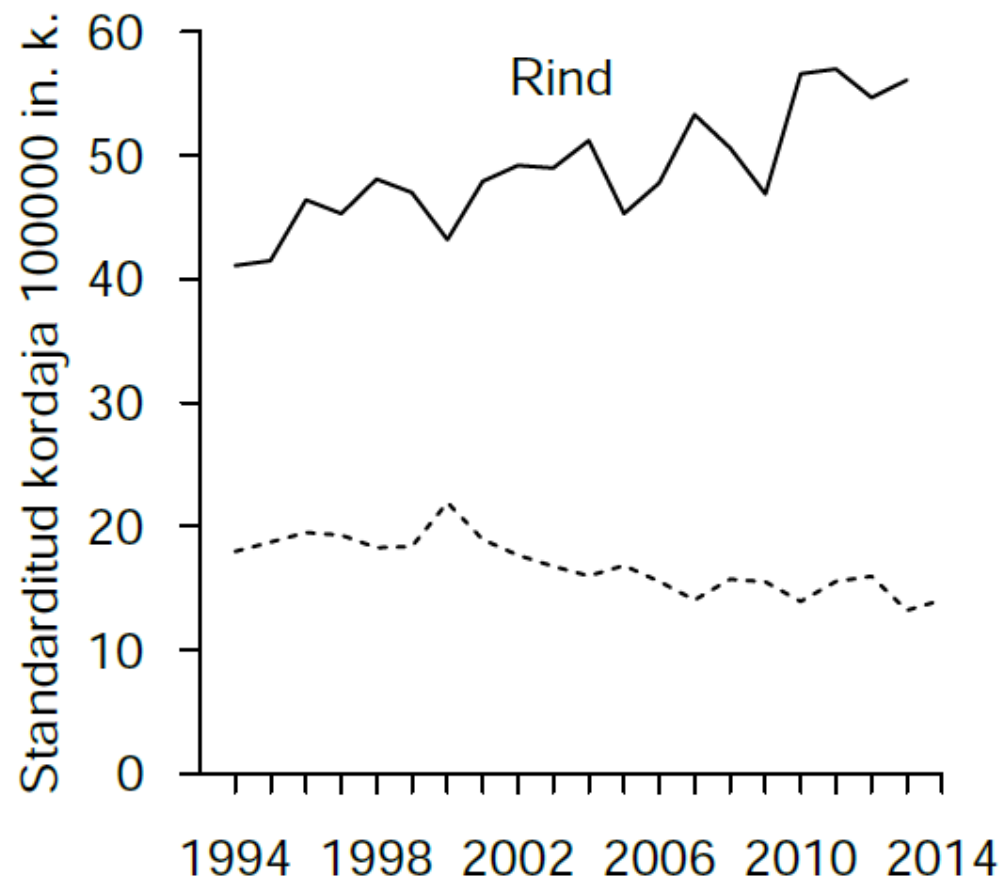
Vähihaigestumus (pidev joon) ja -suremus (katkendlik joon) 1994–2013



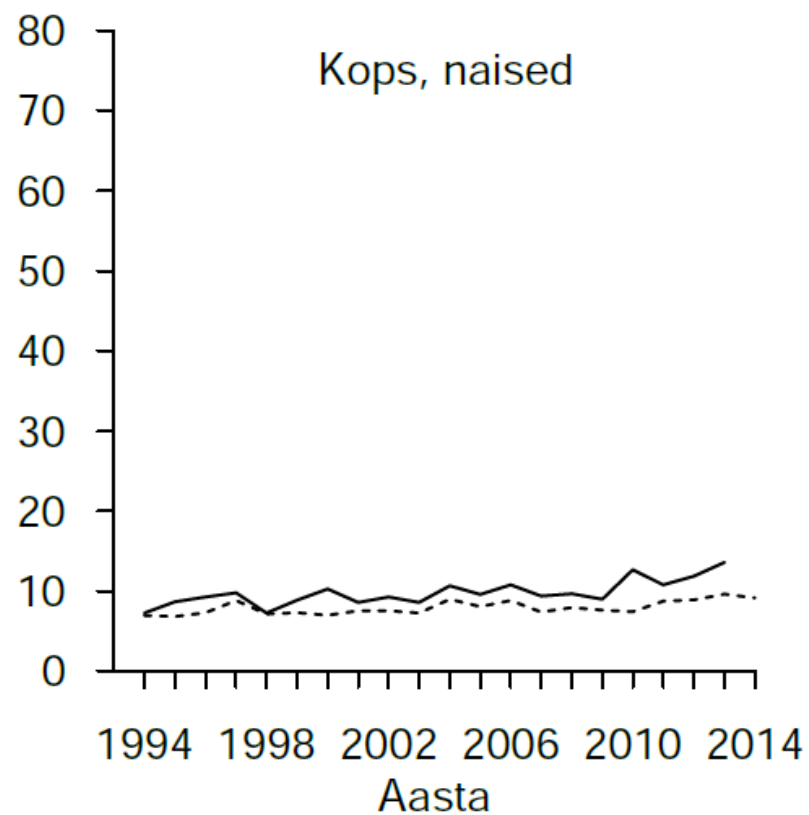
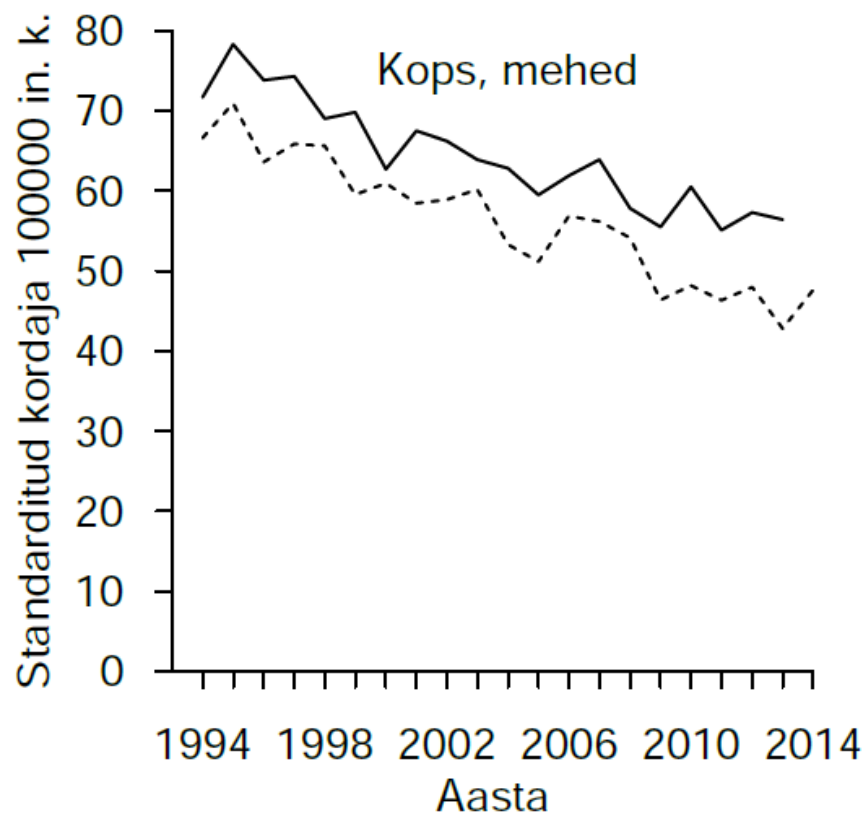
Vähihaigestumus (pidev joon) ja -suremus (katkendlik joon) 1994–2013



Vähihaigestumus (pidev joon) ja -suremus (katkendlik joon) 1994–2013

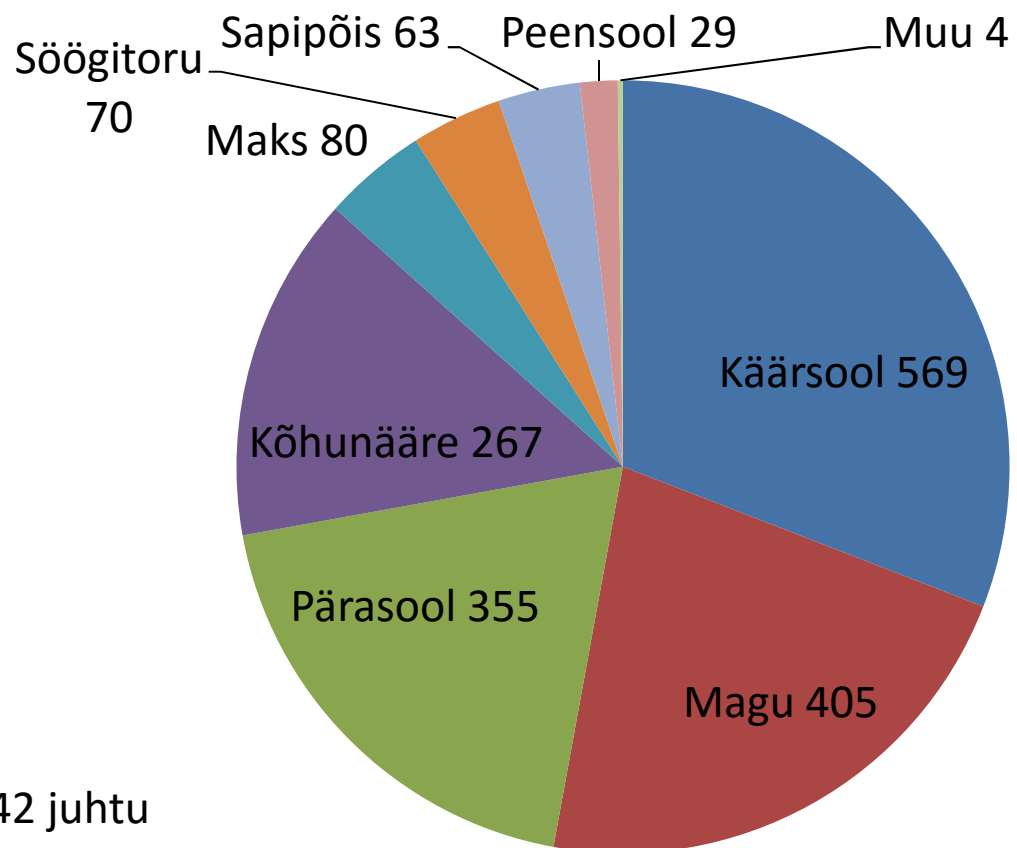


Vähihaigestumus (pidev joon) ja -suremus (katkendlik joon) 1994–2013



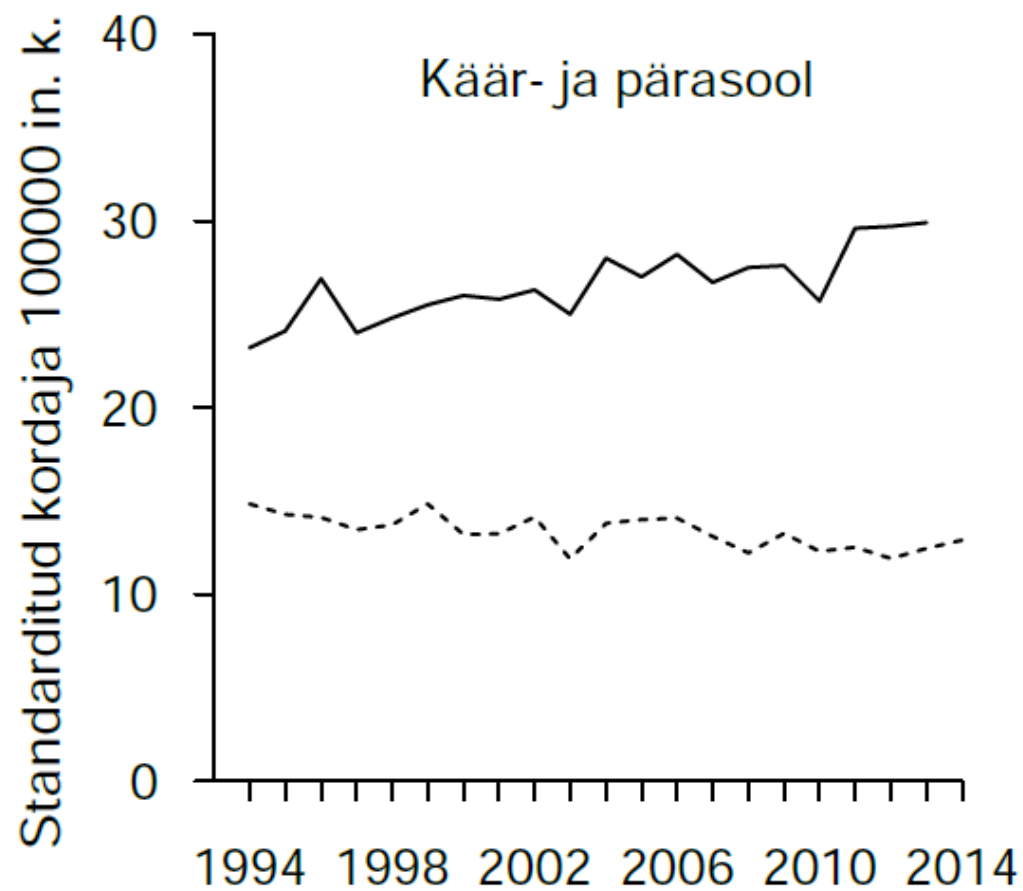
Seedeelundite vähk 2013

Allikas: vähiregister

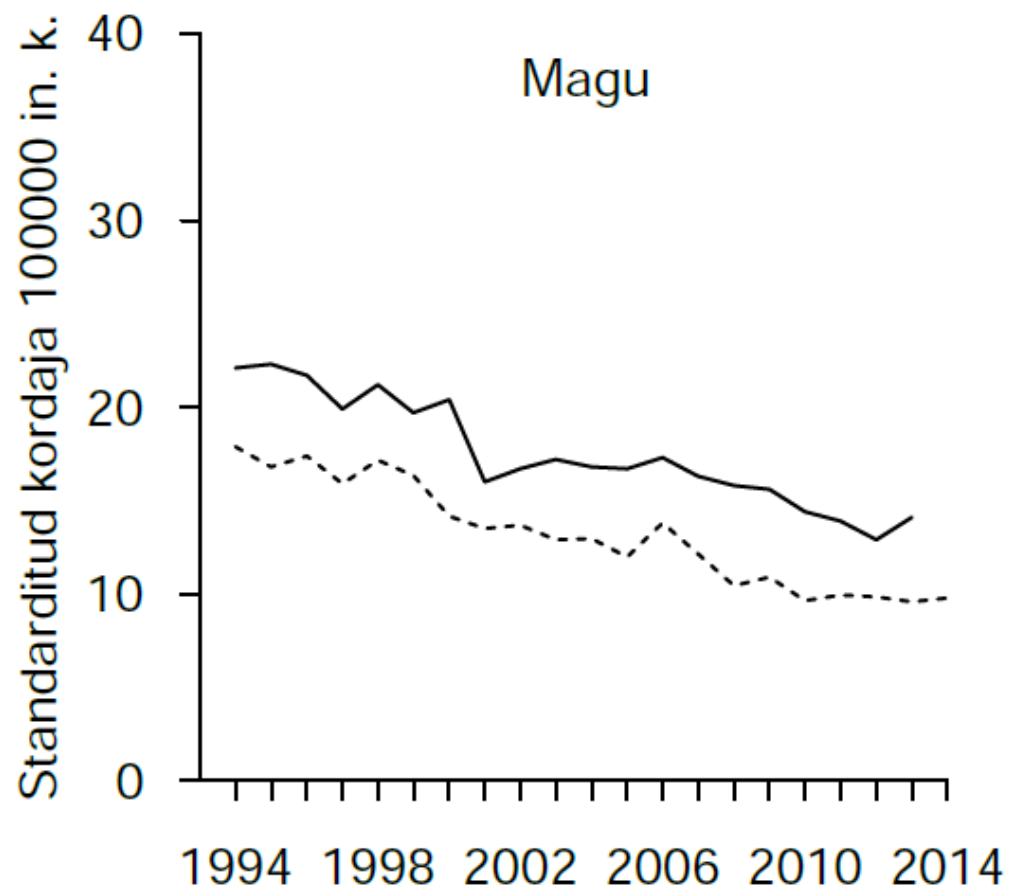


Kokku 1842 juhtu

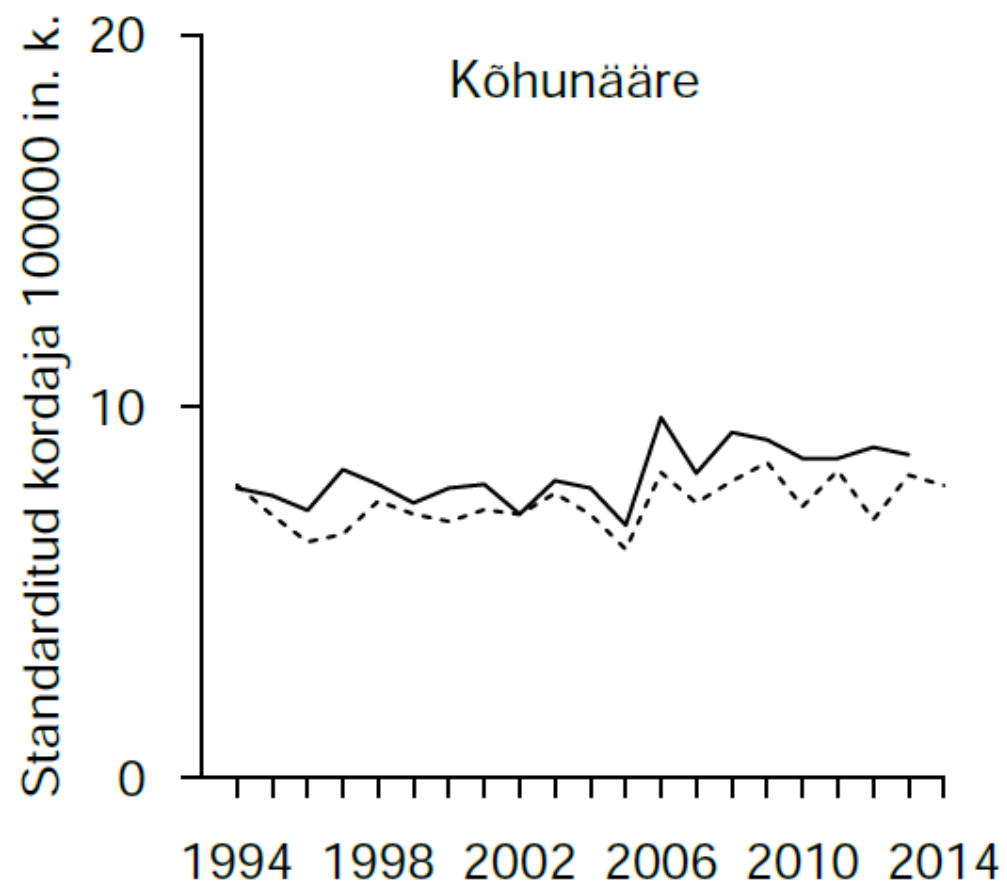
Vähihaigestumus (pidev joon) ja -suremus (katkendlik joon) 1994–2013



Vähihaigestumus (pidev joon) ja -suremus (katkendlik joon) 1994–2013

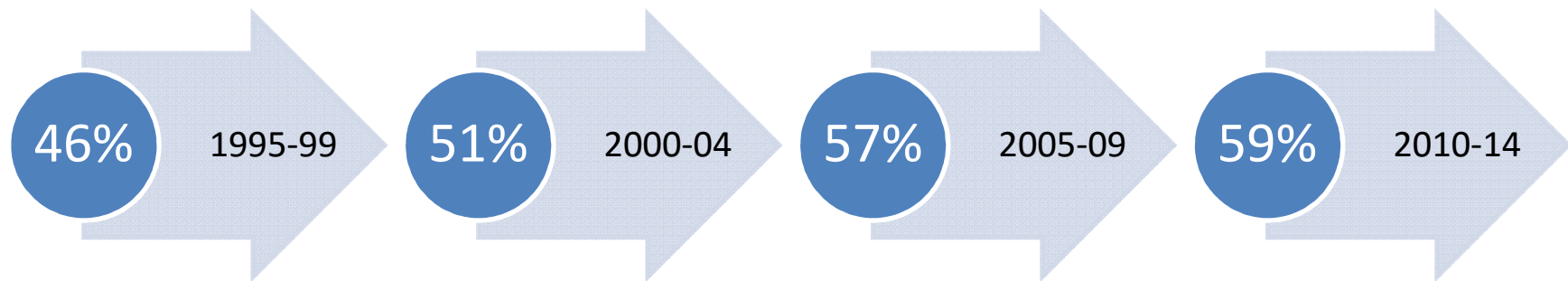


Vähihaigestumus (pidev joon) ja -suremus (katkendlik joon) 1994–2013



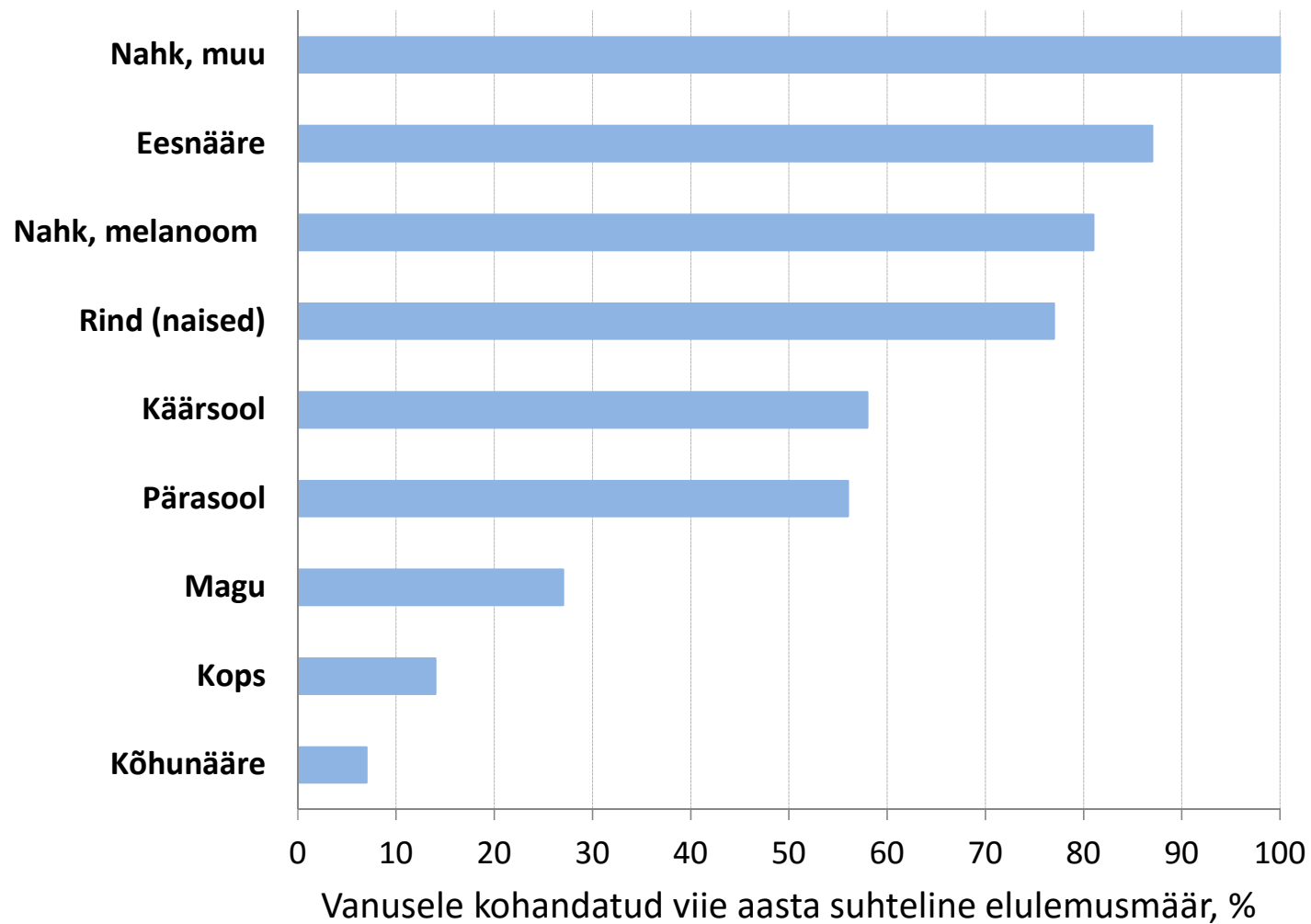
Viie aasta suhteline elulemus, kõik paikmed

Mitu % haigestunutest on elus viis aastat pärast diagnoosimist?



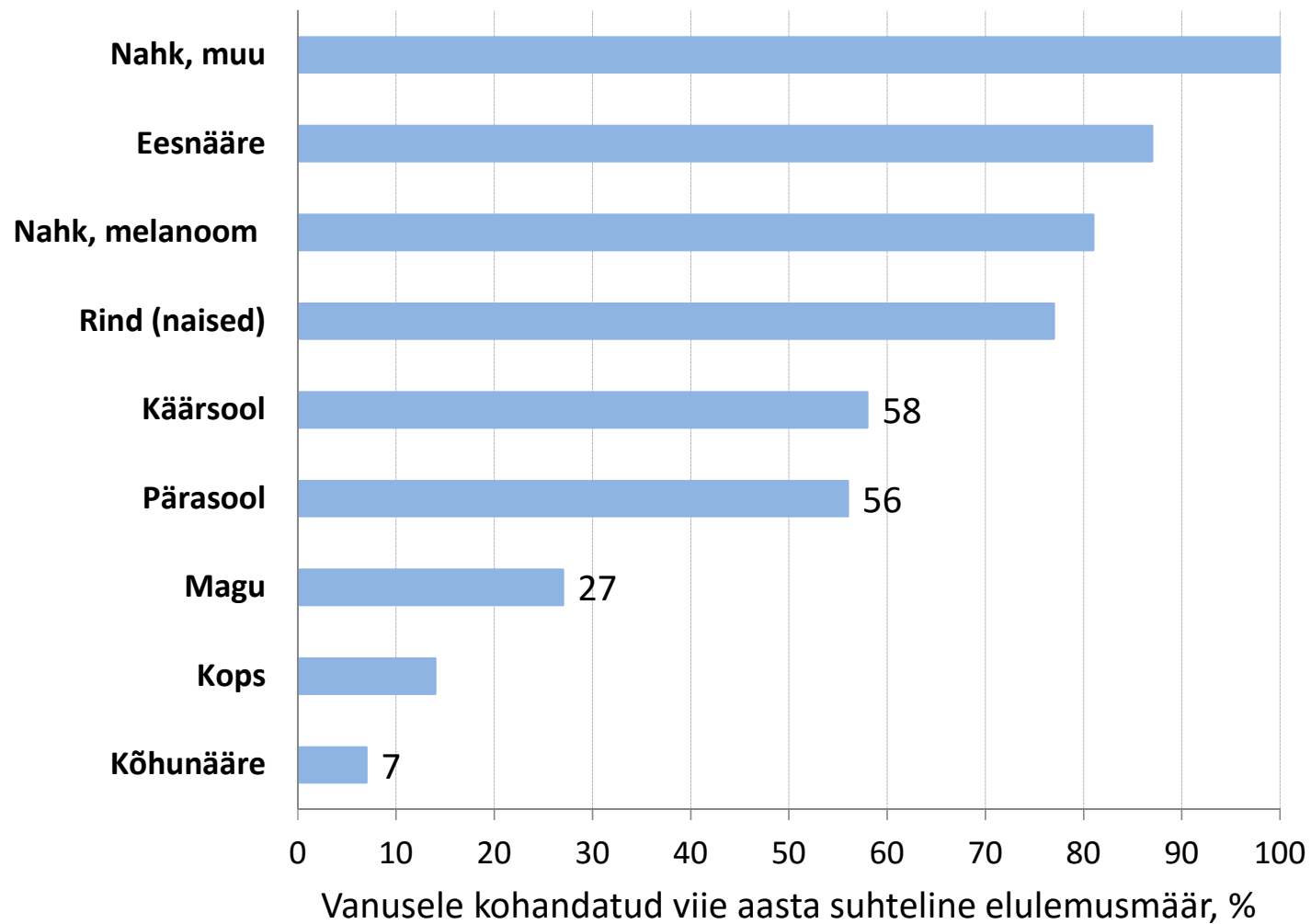
10 aasta elulemus **55%**

Viie aasta suhteline elulemus



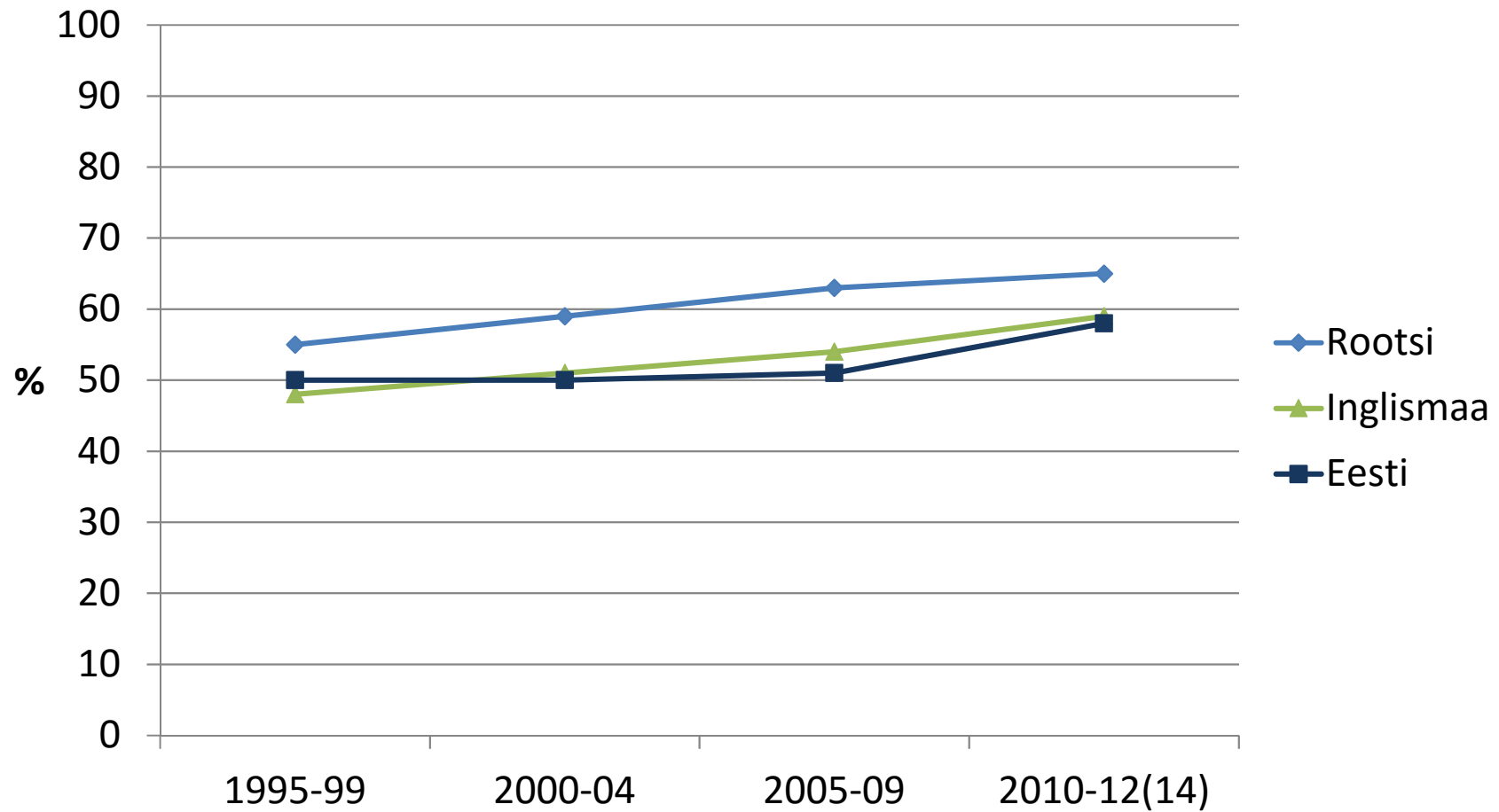
■ 2010–2014

Viie aasta suhteline elulemus

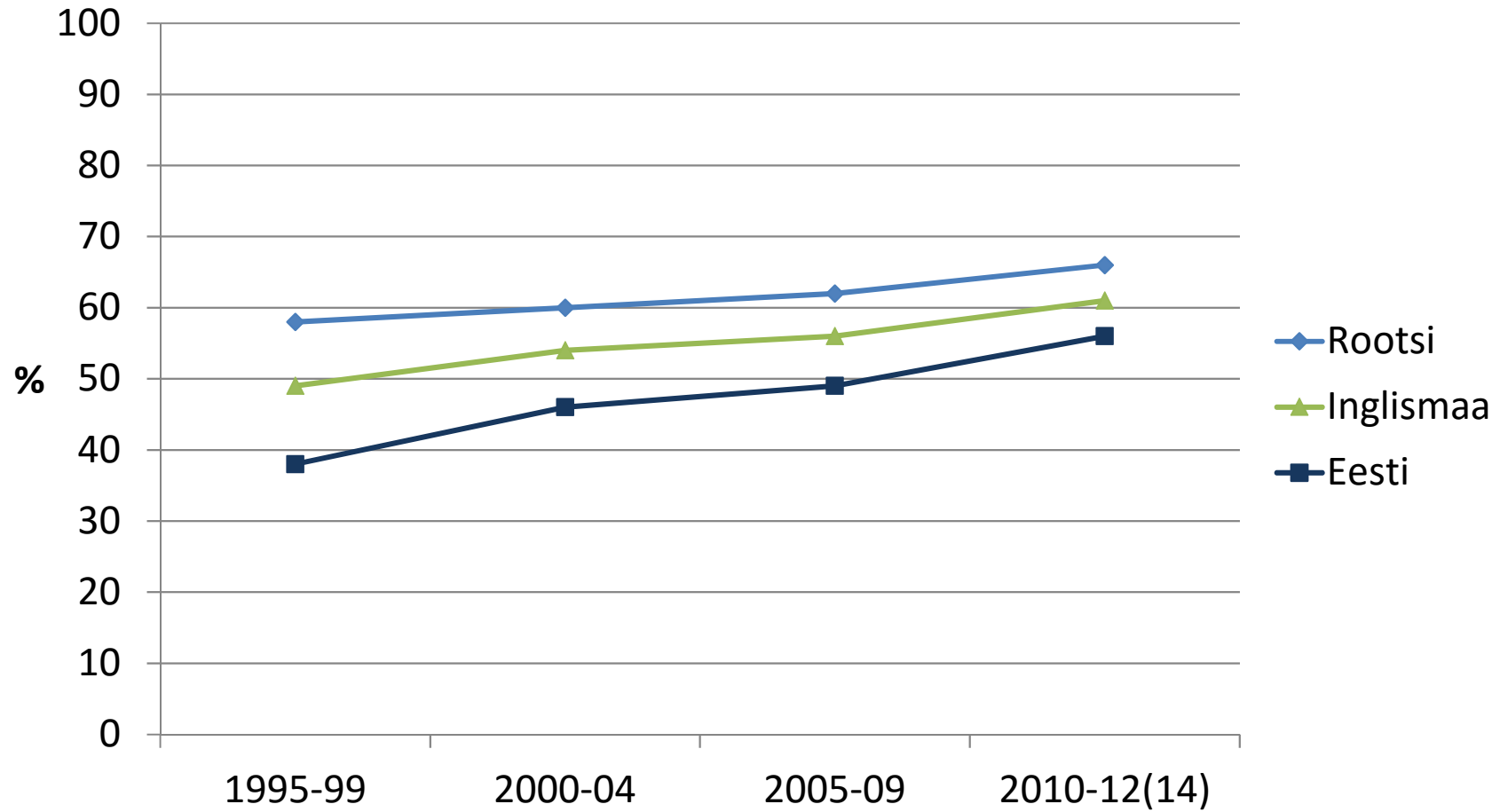


■ 2010–2014

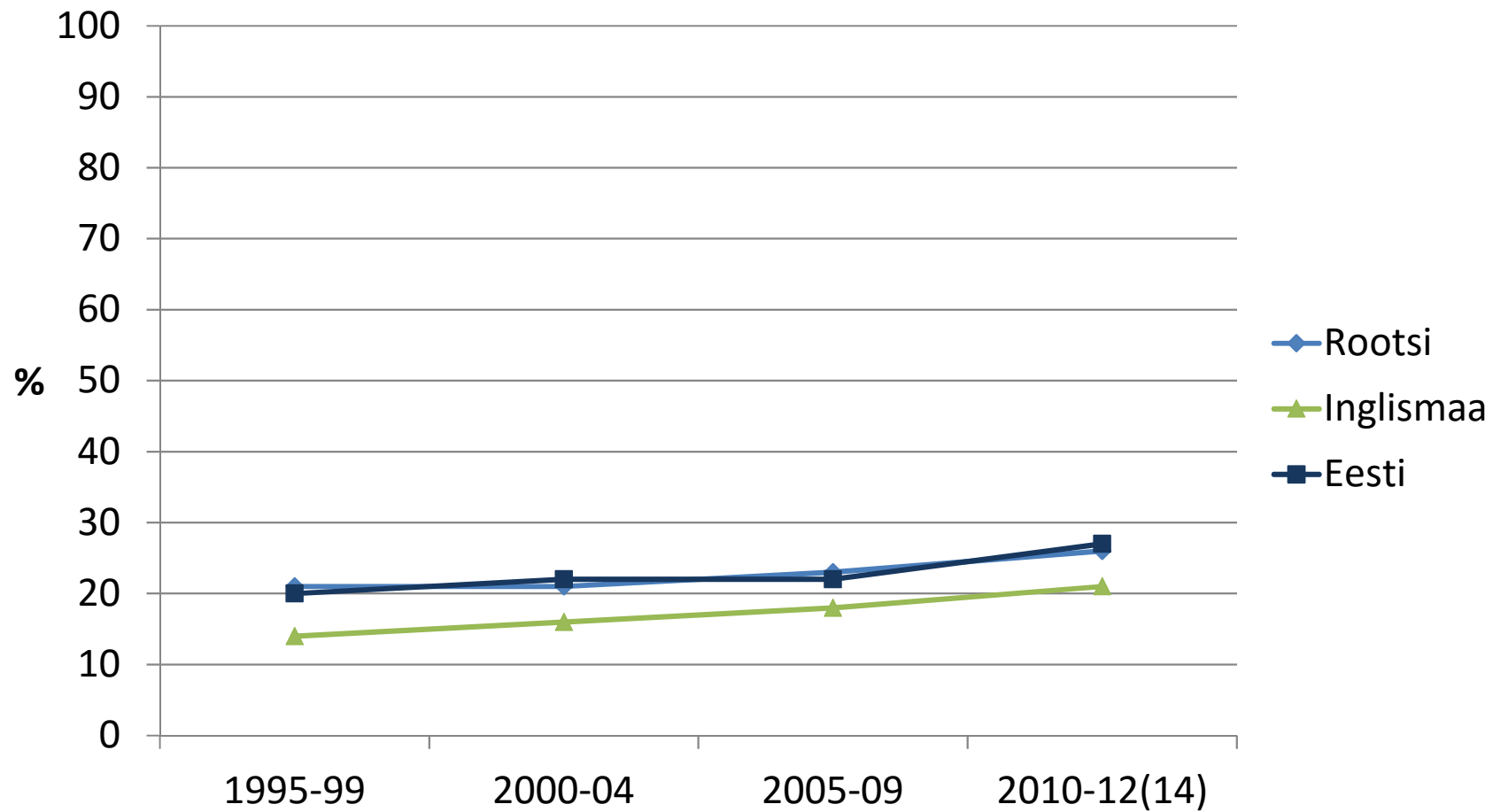
Käärsoolevähi viie aasta suhteline elulemus



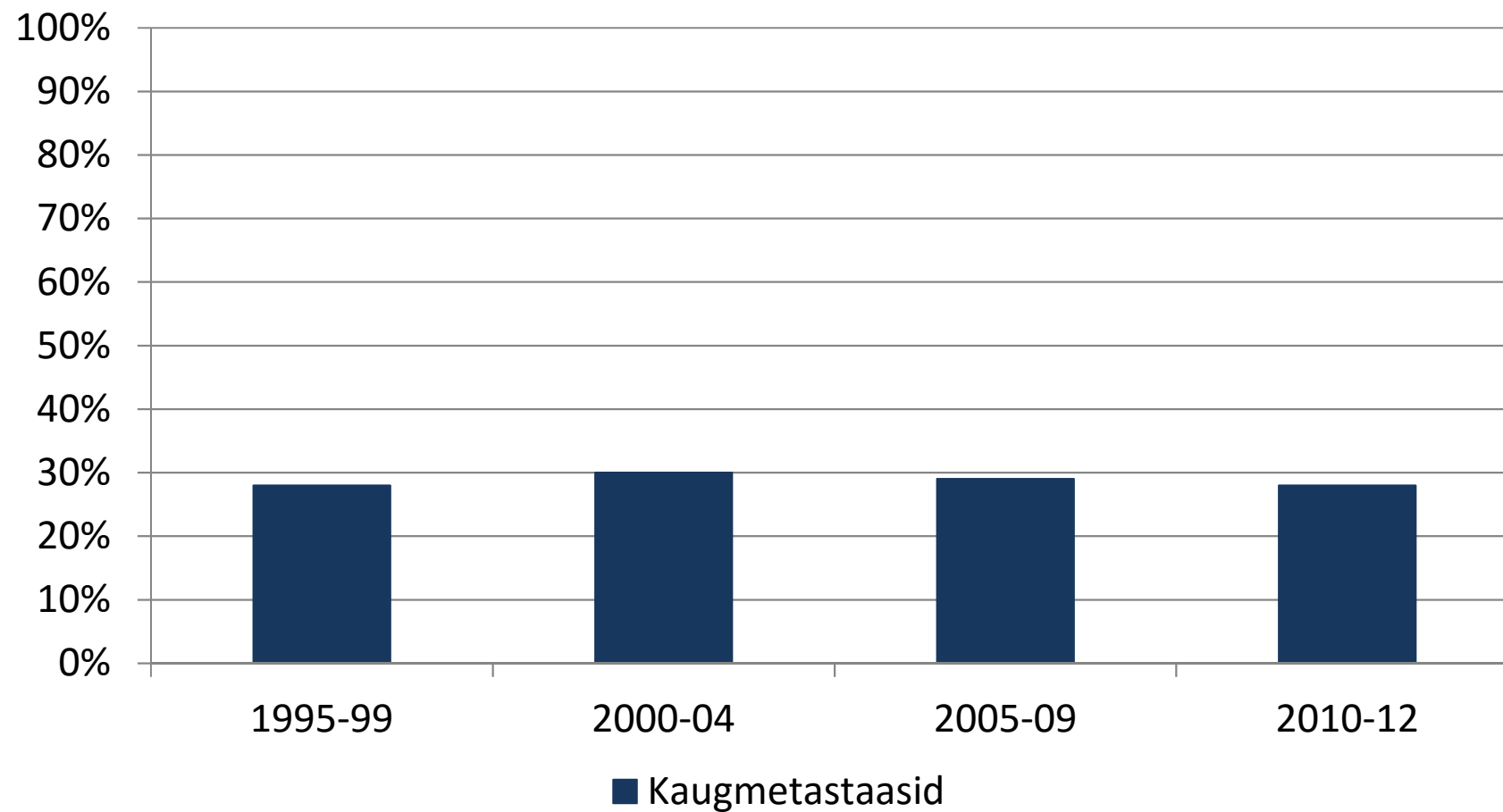
Pärasoolevähi viie aasta suhteline elulemus



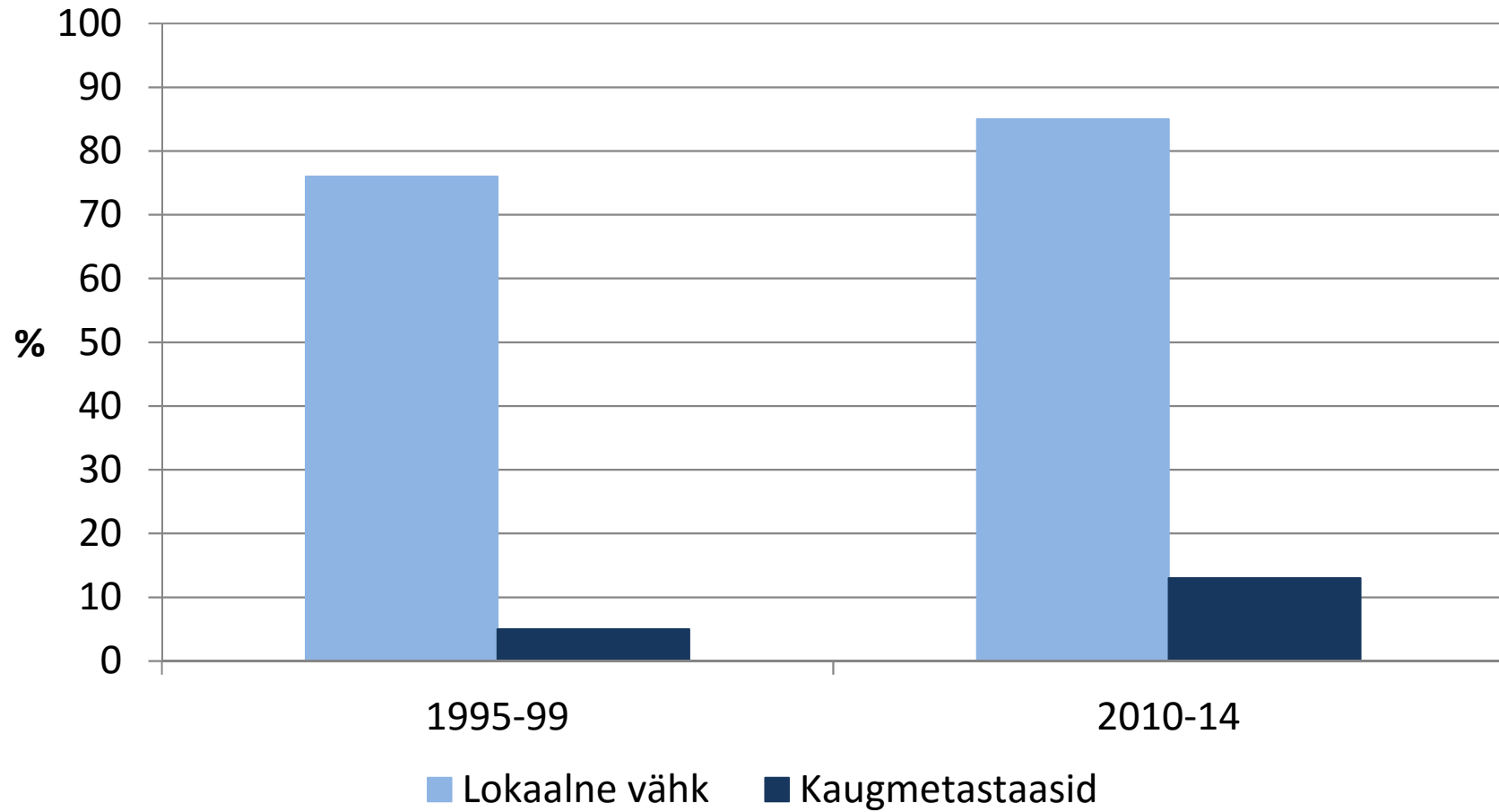
Maovähi viie aasta suhteline elulemus



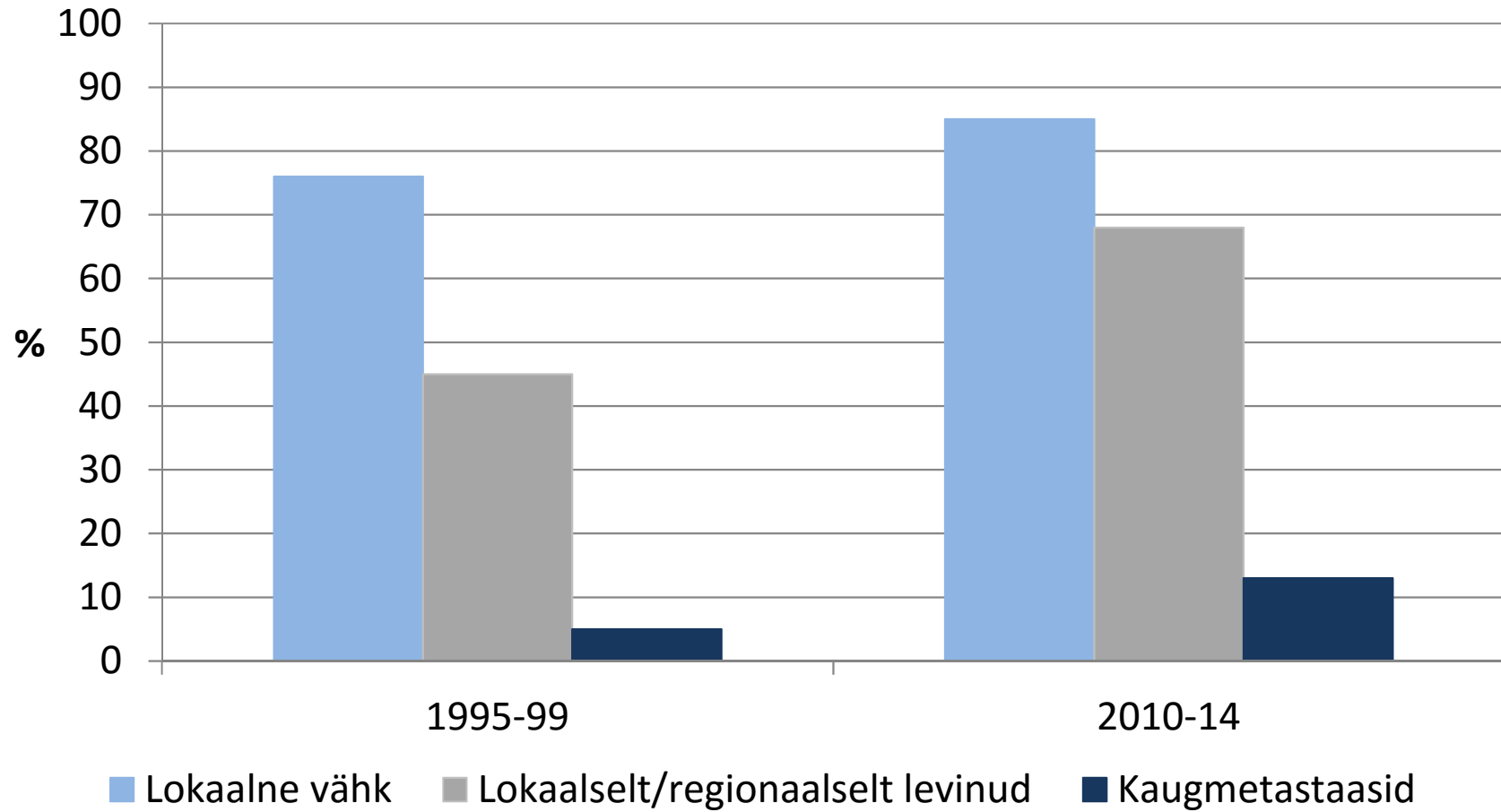
Kaugmetastaasidega soolevähijuhtude osakaal (teadaoleva staadiumiga juhtude seas)



Soolevähi viie aasta suhteline elulemus staadiumi järgi



Soolevähi viie aasta suhteline elulemus staadiumi järgi



Täna!

Kaire.innos@tai.ee

<http://www.tai.ee/et/tegevused/registrid/vahiregister/statistika>